

Anti-ZBTB10 antibody

| | |
|-----------------|---|
| Cat. No. | ml263131 |
| Package | 25 µl/100 µl/200 µl |
| Storage | -20°C, pH7.4 PBS, 0.05% NaN ₃ , 40% Glycerol |

Product overview

| | |
|---------------------|--|
| Description | Anti-ZBTB10 rabbit polyclonal antibody |
| Applications | ELISA, WB, IHC |
| Immunogen | Synthetic peptide of human ZBTB10 |
| Reactivity | Human |
| Content | 1.7 mg/ml |
| Host species | Rabbit |
| Ig class | Immunogen-specific rabbit IgG |
| Purification | Antigen affinity purification |

Target information

| | |
|------------------|--|
| Symbol | ZBTB10 |
| Full name | zinc finger and BTB domain containing 10 |

| | |
|------------------|--------|
| Synonyms | RINZF |
| Swissprot | Q96DT7 |

Target Background

RINZF, also known as ZBTB10 (zinc finger and BTB domain containing protein 10), is a 847 amino acid protein that contains one BTB/POZ domain and two C2H2-type zinc fingers. Localized to the nucleus, RINZF is believed to play a role in transcriptional regulation. Specifically, RINZF is capable of binding to the CACC element of the Gastrin promoter. In this regard, RINZF competes with Sp1 for CACC binding and interferes with Sp1 transactivation, thereby regulating Gastrin gene expression. The rat RINZF protein shares 98% homology with the human RINZF protein, suggesting that RINZF is a conserved protein. Due to alternative splicing events, two RINZF isoforms exist. In addition, RINZF may be phosphorylated by ATR or ATM upon DNA damage.

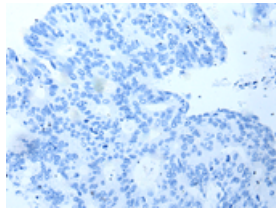
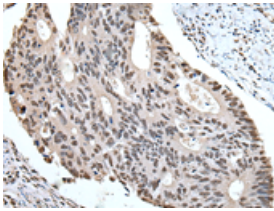
Applications

Immunohistochemistry

Predicted cell location: Nucleus and Cytoplasm

Positive control: Human colorectal cancer

Recommended dilution: 50-300

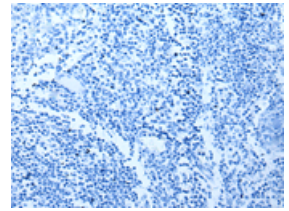
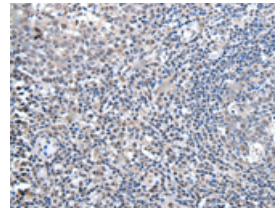


The image on the left is immunohistochemistry of paraffin-embedded Human colorectal cancer tissue using ml263131(ZBTB10 Antibody) at dilution 1/100, on the right is treated with synthetic peptide. (Original magnification: $\times 200$)

Predicted cell location: Nucleus and Cytoplasm

Positive control: Human tonsil

Recommended dilution: 50-300



The image on the left is immunohistochemistry of paraffin-embedded Human tonsil tissue using ml263131(ZBTB10 Antibody) at dilution 1/100, on the right is treated with synthetic peptide. (Original magnification: $\times 200$)

Western blotting

Predicted band size: 95 kDa

Positive control: Jurkat cell lysate

Recommended dilution: 500-2000

订购热线: 4008-898-798

Gel: 6%SDS-PAGE

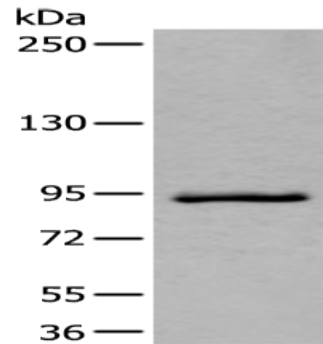
Lysate: 40 μ g

Lane: Jurkat cell lysate

Primary antibody: ml263131(ZBTB10 Antibody) at dilution 1/800

Secondary antibody: Goat anti rabbit IgG at 1/8000 dilution

Exposure time: 40 seconds



ELISA

Recommended dilution: 5000-10000

联系电话: 4008-898-798, 021-61725725

联系QQ: 2881505695, 2881505696

邮箱: mlbio_cn@yeah.net

网址: www.mlbio.cn