

## Anti-WDSUB1 antibody

<b>Cat. No.</b>	ml263185
<b>Package</b>	25 µl/100 µl/200 µl
<b>Storage</b>	-20°C, pH7.4 PBS, 0.05% NaN <sub>3</sub> , 40% Glycerol

### Product overview

<b>Description</b>	Anti-WDSUB1 rabbit polyclonal antibody
<b>Applications</b>	ELISA, WB, IHC
<b>Immunogen</b>	Synthetic peptide of human WDSUB1
<b>Reactivity</b>	Human
<b>Content</b>	0.4 mg/ml
<b>Host species</b>	Rabbit
<b>Ig class</b>	Immunogen-specific rabbit IgG
<b>Purification</b>	Antigen affinity purification

### Target information

<b>Symbol</b>	WDSUB1
<b>Full name</b>	WD repeat, sterile alpha motif and U-box domain containing 1

**Synonyms** UBOX6; WDSAM1

**Swissprot** Q8N9V3

### **Target Background**

WDSUB1 (WD repeat, SAM and U-box domain-containing protein 1), also known as UBOX6 or WDSAM1, is a 476 amino acid protein that contains one SAM (sterile alpha motif) domain, one U-box domain and seven WD repeats. Existing as two isoforms due to alternative splicing, WDSUB1 is encoded by a gene located on chromosome 2. The second largest human chromosome, chromosome 2 encodes over 1,400 genes and comprises nearly 8% of the human genome, housing a number of disease-associated genes. Harlequin ichthyosis, a rare and morbid skin deformity, is associated with mutations in the ABCA12 gene, while the lipid metabolic disorder sitosterolemia is associated with defects in the ABCG5 and ABCG8 genes. Additionally, an extremely rare recessive genetic disorder, Alström syndrome, is caused by mutations in the ALMS1 gene, which maps to chromosome 2.

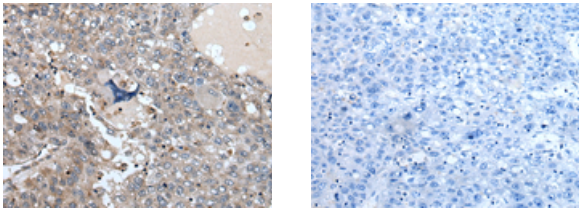
## Applications

### Immunohistochemistry

Predicted cell location: Cytoplasm and Cell membrane

Positive control: Human liver cancer

Recommended dilution: 25-100



The image on the left is immunohistochemistry of paraffin-embedded Human liver cancer tissue using ml263185(WDSUB1 Antibody) at dilution 1/25, on the right is treated with synthetic peptide. (Original magnification:  $\times 200$ )

### Western blotting

Predicted band size: 53 kDa

Positive control: 231, K562, 293T and Hela cell lysates

Recommended dilution: 200-1000

订购热线: 4008-898-798

Gel: 8%SDS-PAGE

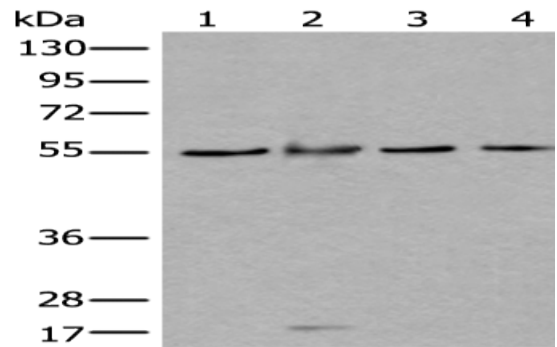
Lysate: 40  $\mu$ g

Lane 1-4: 231, K562, 293T and HeLa cell lysates

Primary antibody: ml263185(WDSUB1 Antibody) at dilution 1/250

Secondary antibody: Goat anti rabbit IgG at 1/8000 dilution

Exposure time: 10 seconds



#### ELISA

Recommended dilution: 5000-10000

联系电话: 4008-898-798, 021-61725725

联系QQ: 2881505695, 2881505696

邮箱: [mlbio\\_cn@yeah.net](mailto:mlbio_cn@yeah.net)

网址: [www.mlbio.cn](http://www.mlbio.cn)