

Anti-VPS35 antibody

Cat. No.	ml263212
Package	25 µl/100 µl/200 µl
Storage	-20°C, pH7.4 PBS, 0.05% NaN ₃ , 40% Glycerol

Product overview

Description	Anti-VPS35 rabbit polyclonal antibody
Applications	ELISA, WB, IHC
Immunogen	Synthetic peptide of human VPS35
Reactivity	Human, Mouse
Content	0.5 mg/ml
Host species	Rabbit
Ig class	Immunogen-specific rabbit IgG
Purification	Antigen affinity purification

Target information

Symbol	VPS35
Full name	VPS35 retromer complex component

Synonyms MEM3; PARK17

Swissprot Q96QK1

Target Background

This gene belongs to a group of vacuolar protein sorting (VPS) genes. The encoded protein is a component of a large multimeric complex, termed the retromer complex, involved in retrograde transport of proteins from endosomes to the trans-Golgi network. The close structural similarity between the yeast and human proteins that make up this complex suggests a similarity in function. Expression studies in yeast and mammalian cells indicate that this protein interacts directly with VPS35, which serves as the core of the retromer complex.

Applications

Immunohistochemistry

Predicted cell location: Cytoplasm or Nucleus

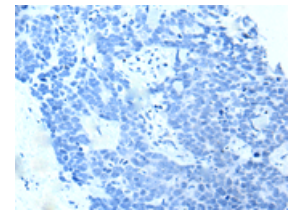
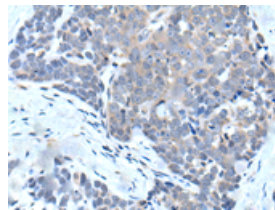
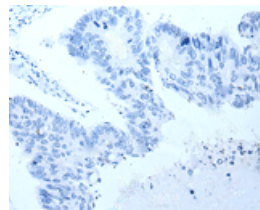
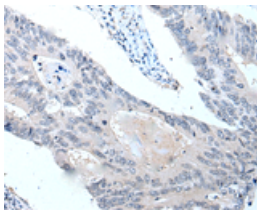
Predicted cell location: Cytoplasm or Nucleus

Positive control: Human colorectal cancer

Positive control: Human thyroid cancer

Recommended dilution: 20-100

Recommended dilution: 20-100



The image on the left is immunohistochemistry of paraffin-embedded Human colorectal cancer tissue using m1263212(VPS35 Antibody) at dilution 1/25, on the right is treated with synthetic peptide. (Original magnification: $\times 200$)

The image on the left is immunohistochemistry of paraffin-embedded Human thyroid cancer tissue using m1263212(VPS35 Antibody) at dilution 1/25, on the right is treated with synthetic peptide. (Original magnification: $\times 200$)

Western blotting

Predicted band size: 92 kDa

Positive control: Hela, HEPG2, Raji, NIH/3T3 and A549 cell lysates, Human cerebella tissue and Mouse brain tissue lysates

Recommended dilution: 500-2000

订购热线: 4008-898-798

Gel: 6%SDS-PAGE

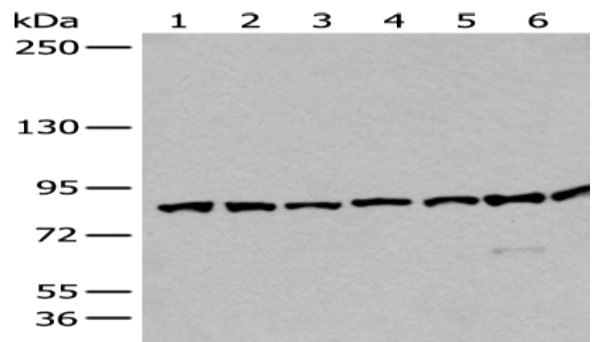
Lysate: 40 µg

Lane 1-7: HeLa,HEPG2,Raji,NIH/3T3 and A549 cell lysates,Human cerebella tissue and Mouse brain tissue lysates

Primary antibody: ml263212(VPS35 Antibody) at dilution 1/250

Secondary antibody: Goat anti rabbit IgG at 1/8000 dilution

Exposure time: 1 minute



ELISA

Recommended dilution: 5000-10000

联系电话: 4008-898-798, 021-61725725

联系QQ: 2881505695, 2881505696

邮箱: mlbio_cn@yeah.net

网址: www.mlbio.cn