

## Anti-BHLHA15 antibody

<b>Cat. No.</b>	ml263274
<b>Package</b>	25 µl/100 µl/200 µl
<b>Storage</b>	-20°C, pH7.4 PBS, 0.05% NaN <sub>3</sub> , 40% Glycerol

### Product overview

<b>Description</b>	Anti-BHLHA15 rabbit polyclonal antibody
<b>Applications</b>	ELISA, WB, IHC
<b>Immunogen</b>	Synthetic peptide of human BHLHA15
<b>Reactivity</b>	Human, Mouse, Rat
<b>Content</b>	0.1 mg/ml
<b>Host species</b>	Rabbit
<b>Ig class</b>	Immunogen-specific rabbit IgG
<b>Purification</b>	Antigen affinity purification

### Target information

<b>Symbol</b>	BHLHA15
<b>Full name</b>	basic helix-loop-helix family member a15

**Synonyms** MIST1; BHLHB8

**Swissprot** Q7RTS1

### **Target Background**

MIST1 (muscle, intestine and stomach expression 1), also known as BHLHB8 (basic helix-loop-helix domain containing, class B, 8), is a 189 amino acid nuclear protein expressed in liver, brain, skeletal muscle and spleen. MIST1 contains a basic helix-loop-helix (bHLH) domain and belongs to the bHLH family of transcription factors. Members of this family bind to the E-box motifs present in the promoter or enhancer regions of a variety of developmentally regulated genes and function as either transcriptional activators or transcriptional repressors. MIST1 is capable of binding to E-box motifs as a homodimer or a heterodimer with E-proteins (E12 and E47) and is believed to play a role regulating the transcriptional activity of MyoD, a protein involved in the regulation of muscle cell development. More specifically, MIST1 functions as a repressor of MyoD activity, ensuring that myoblast populations do not differentiate. In addition, MIST1 is expressed in mammary epithelial cells and is essential for the regulation of mammary gland development.

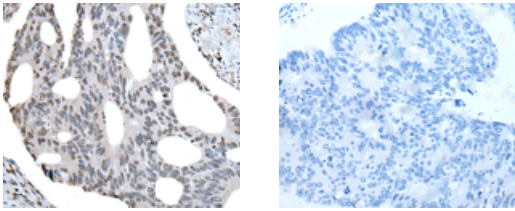
## Applications

### Immunohistochemistry

Predicted cell location: Nucleus

Positive control: Human colorectal cancer

Recommended dilution: 20-100



The image on the left is immunohistochemistry of paraffin-embedded Human colorectal cancer tissue using ml263274(BHLHA15 Antibody) at dilution 1/25, on the right is treated with synthetic peptide. (Original magnification:  $\times 200$ )

### Western blotting

Predicted band size: 21 kDa

Positive control: Human muscle tissue, Human spleen tissue, Mouse Pancreas tissue, Human pancreas tissue and Mouse liver tissue lysates

Recommended dilution: 200-1000

订购热线: 4008-898-798

Gel: 12%SDS-PAGE

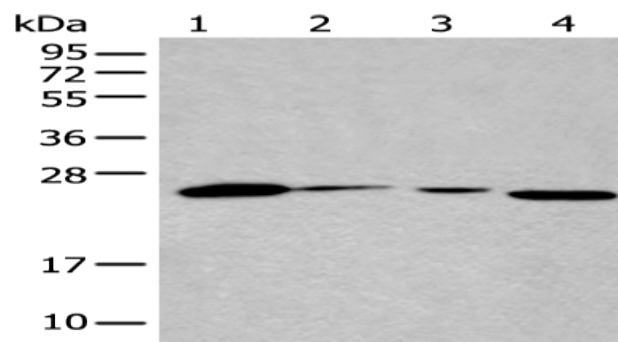
Lysate: 40  $\mu$ g

Lane 1-5: Human muscle tissue, Human spleen tissue, Mouse  
Pancreas tissue, Human pancreas tissue and Mouse liver tissue  
lysates

Primary antibody: ml263274(BHLHA15 Antibody) at dilution 1/250

Secondary antibody: Goat anti rabbit IgG at 1/8000 dilution

Exposure time: 1 minute



## ELISA

Recommended dilution: 5000-10000

联系电话: 4008-898-798, 021-61725725

联系QQ: 2881505695, 2881505696

邮箱: [mlbio\\_cn@yeah.net](mailto:mlbio_cn@yeah.net)

网址: [www.mlbio.cn](http://www.mlbio.cn)