

Anti-FAM234A antibody

Cat. No.	ml263333
Package	25 µl/100 µl/200 µl
Storage	-20°C, pH7.4 PBS, 0.05% NaN ₃ , 40% Glycerol

Product overview

Description	Anti-FAM234A rabbit polyclonal antibody
Applications	ELISA, WB, IHC
Immunogen	Synthetic peptide of human FAM234A
Reactivity	Human, Mouse, Rat
Content	0.3 mg/ml
Host species	Rabbit
Ig class	Immunogen-specific rabbit IgG
Purification	Antigen affinity purification

Target information

Symbol	FAM234A
Full name	family with sequence similarity 234 member A

Synonyms gs19; ITFG3; C16orf9

Swissprot Q9H0X4

Target Background

FAM234A, also known as ITFG3, which is a 552 amino acid single-pass transmembrane protein that contains FG-GAP repeats, a motif commonly found in Integrin proteins. There are two isoforms of ITFG3 that are produced as a result of alternative splicing events.

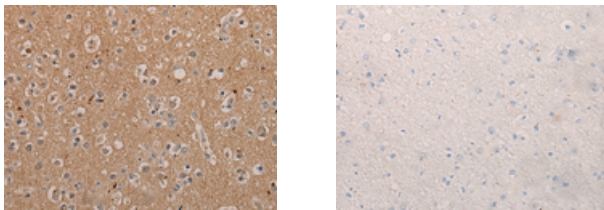
Applications

Immunohistochemistry

Predicted cell location: Cell membrane

Positive control: Human brain

Recommended dilution: 20-100



The image on the left is immunohistochemistry of paraffin-embedded Human brain tissue using ml263333(FAM234A Antibody) at dilution 1/25, on the right is treated with synthetic peptide. (Original magnification: ×200)

Western blotting

Predicted band size:60 kDa

Positive control:Rat brain tissue lysate

Recommended dilution: 200-1000

订购热线: 4008-898-798

Gel: 8%SDS-PAGE

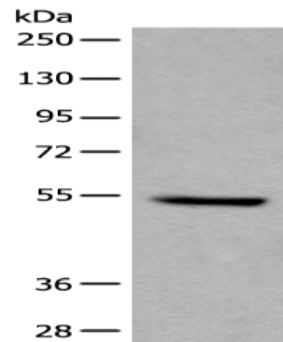
Lysate: 40 μ g

Lane: Rat brain tissue lysate

Primary antibody: ml263333(FAM234A Antibody) at dilution 1/200

Secondary antibody: Goat anti rabbit IgG at 1/8000 dilution

Exposure time: 6 minutes



ELISA

Recommended dilution: 5000-10000

联系电话: 4008-898-798, 021-61725725

联系QQ: 2881505695, 2881505696

邮箱: mlbio_cn@yeah.net

网址: www.mlbio.cn