

## Anti-CDC42BPA antibody

<b>Cat. No.</b>	D263412
<b>Package</b>	25 µl/100 µl/200 µl
<b>Storage</b>	-20°C, pH7.4 PBS, 0.05% NaN <sub>3</sub> , 40% Glycerol

### Product overview

<b>Description</b>	Anti-CDC42BPA rabbit polyclonal antibody
<b>Applications</b>	ELISA, WB, IHC
<b>Immunogen</b>	Synthetic peptide of human CDC42BPA
<b>Reactivity</b>	Human, Mouse, Rat
<b>Content</b>	1 mg/ml
<b>Host species</b>	Rabbit
<b>Ig class</b>	Immunogen-specific rabbit IgG
<b>Purification</b>	Antigen affinity purification

### Target information

<b>Symbol</b>	CDC42BPA
<b>Full name</b>	CDC42 binding protein kinase alpha
<b>Synonyms</b>	MRCK; MRCKA; PK428
<b>Swissprot</b>	Q5VT25

### Target Background

The protein encoded by this gene is a member of the Serine/Threonine protein kinase family. This kinase contains multiple functional domains. Its kinase domain is highly similar to that of the myotonic dystrophy protein kinase (DMPK). This kinase also contains a Rac interactive binding (CRIB) domain, and has been shown to bind CDC42. It may function as a CDC42 downstream effector mediating CDC42 induced peripheral actin formation, and promoting cytoskeletal reorganization. Multiple alternatively spliced transcript variants have been described, and the full-length nature of two of them has been reported.

订购热线: 4008-898-798

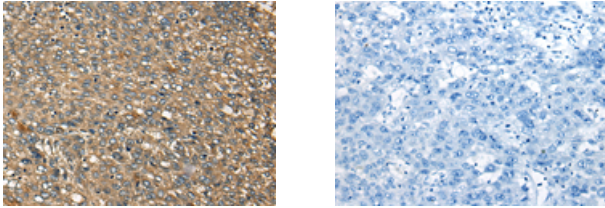
### Applications

#### Immunohistochemistry

Predicted cell location: Cytoplasm

Positive control: Human liver cancer

Recommended dilution: 30-150



The image on the left is immunohistochemistry of paraffin-embedded Human liver cancer tissue using ml263412(CDC42BPA Antibody) at dilution 1/45, on the right is treated with synthetic peptide. (Original magnification:  $\times 200$ )

#### Western blotting

Predicted band size: 197 kDa

Positive control: A172 cell lysate

Recommended dilution: 500-2000

Gel: 6%SDS-PAGE

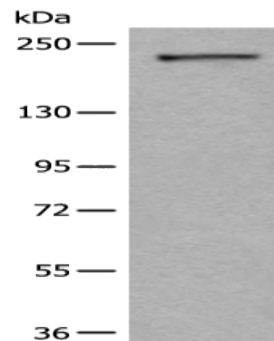
Lysate: 40  $\mu$ g

Lane: A172 cell lysate

Primary antibody: ml263412(CDC42BPA Antibody) at dilution 1/600

Secondary antibody: Goat anti rabbit IgG at 1/8000 dilution

Exposure time: 5 minutes



#### ELISA

Recommended dilution: 5000-10000

联系电话: 4008-898-798, 021-61725725

联系QQ: 2881505695, 2881505696

邮箱: mlbio\_cn@yeah.net

网址: www.mlbio.cn