

Anti-CREG1 antibody

Cat. No.	ml263640
Package	25 µl/100 µl/200 µl
Storage	-20°C, pH7.4 PBS, 0.05% NaN ₃ , 40% Glycerol

Product overview

Description	Anti-CREG1 rabbit polyclonal antibody
Applications	ELISA, WB
Immunogen	Synthetic peptide of human CREG1
Reactivity	Human, Mouse
Content	0.9 mg/ml
Host species	Rabbit
Ig class	Immunogen-specific rabbit IgG
Purification	Antigen affinity purification

Target information

Symbol	CREG1
Full name	cellular repressor of E1A stimulated genes 1
Synonyms	CREG
Swissprot	O75629

Target Background

The adenovirus E1A protein both activates and represses gene expression to promote cellular proliferation and inhibit differentiation. The protein encoded by this gene antagonizes transcriptional activation and cellular transformation by E1A. This protein shares limited sequence similarity with E1A and binds both the general transcription factor TBP and the tumor suppressor pRb in vitro. This gene may contribute to the transcriptional control of cell growth and differentiation.

订购热线: 4008-898-798

Applications

Western blotting

Predicted band size:24 kDa

Positive control:RAW264.7 cell lysate

Recommended dilution: 500-2000

Gel: 12%SDS-PAGE

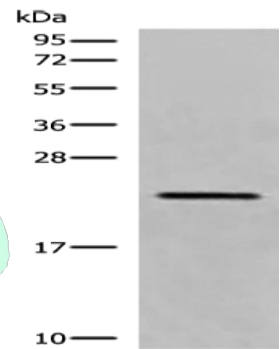
Lysate: 40 μ g

Lane: RAW264.7 cell lysate

Primary antibody: ml263640(CREG1 Antibody) at dilution 1/550

Secondary antibody: Goat anti rabbit IgG at 1/8000 dilution

Exposure time: 30 seconds



ELISA

Recommended dilution:5000-10000

联系电话: 4008-898-798, 021-61725725

联系QQ: 2881505695, 2881505696

邮箱: mlbio_cn@yeah.net

网址: www.mlbio.cn