

Anti-EEA1 antibody

Cat. No.	ml263757
Package	25 µl/100 µl/200 µl
Storage	-20°C, pH7.4 PBS, 0.05% NaN ₃ , 40% Glycerol

Product overview

Description	Anti-EEA1 rabbit polyclonal antibody
Applications	ELISA, WB
Immunogen	Synthetic peptide of human EEA1
Reactivity	Human, Mouse
Content	1.62 mg/ml
Host species	Rabbit
Ig class	Immunogen-specific rabbit IgG
Purification	Antigen affinity purification

Target information

Symbol	EEA1
Full name	early endosome antigen 1
Synonyms	MST105; ZFYVE2; MSTP105
Swissprot	Q15075

Target Background

EEA1 is an early endosomal marker and a Rab5 effector protein essential for early endosomal membrane fusion and trafficking. The carboxy terminus of EEA1 contains a FYVE domain which binds to phosphatidylinositol-3-phosphate (PtdIns(3)P), targeting EEA1 to early endosomes. The stable association of EEA1 with the endosomal membrane is regulated by PI3 kinase, Rab5 and calcium/calmodulin. Once on the membrane, EEA1 interacts with Rab5, NSF and syntaxin 13 to promote early endosomal membrane docking and fusion.

订购热线: 4008-898-798

Applications

Western blotting

Predicted band size:163 kDa

Positive control:NIH/3T3, RAW264.7 and 293T cell, Human metastatic malignant melanoma tissue lysates

Recommended dilution: 500-2000

Gel: 6%SDS-PAGE

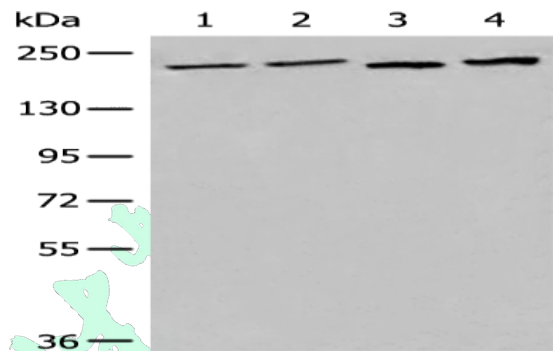
Lysate: 40 µg

Lane 1-4: NIH/3T3, RAW264.7 and 293T cell, Human metastatic malignant melanoma tissue lysates

Primary antibody: ml263757(EEA1 Antibody) at dilution 1/700

Secondary antibody: Goat anti rabbit IgG at 1/8000 dilution

Exposure time: 20 seconds



ELISA

Recommended dilution:5000-10000

联系电话: 4008-898-798, 021-61725725

联系QQ: 2881505695, 2881505696

邮箱: mlbio_cn@yeah.net

网址: www.mlbio.cn