

Anti-EEPD1 antibody

| | |
|-----------------|---|
| Cat. No. | ml263758 |
| Package | 25 µl/100 µl/200 µl |
| Storage | -20°C, pH7.4 PBS, 0.05% NaN ₃ , 40% Glycerol |

Product overview

| | |
|---------------------|---------------------------------------|
| Description | Anti-EEPD1 rabbit polyclonal antibody |
| Applications | ELISA, WB |
| Immunogen | Synthetic peptide of human EEPD1 |
| Reactivity | Human, Mouse |
| Content | 0.72 mg/ml |
| Host species | Rabbit |
| Ig class | Immunogen-specific rabbit IgG |
| Purification | Antigen affinity purification |

Target information

| | |
|---------------|-------|
| Symbol | EEPD1 |
|---------------|-------|

| | |
|------------------|---|
| Full name | endonuclease/exonuclease/phosphatase family domain containing 1 |
| Synonyms | HSPC107 |
| Swissprot | Q7L9B9 |

Target Background

EEPD1 is a DNA 5-prime endonuclease that promotes 5-prime end resection at DNA double-strand breaks at stalled replication forks. EEPD1 is required for DNA repair via homologous recombination

Applications

Western blotting

Predicted band size:63 kDa

Positive control:231 and PC-3 cell lysates

Recommended dilution: 200-1000

Gel: 8%SDS-PAGE

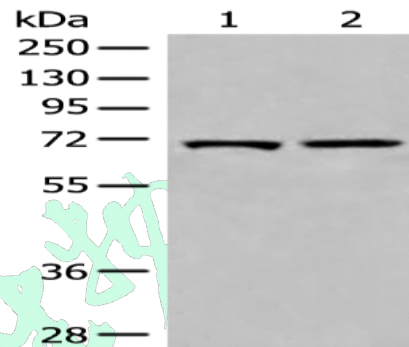
Lysate: 40 μ g

Lane 1-2: 231 and PC-3 cell lysates

Primary antibody: ml263758(EEPD1 Antibody) at dilution 1/300

Secondary antibody: Goat anti rabbit IgG at 1/8000 dilution

Exposure time: 2 minutes



mlbio 酶联生物
Good elisakit producers
订购热线: 4008-898-798

ELISA

Recommended dilution:5000-10000

联系电话: 4008-898-798, 021-61725725

联系QQ: 2881505695, 2881505696

邮箱: mlbio_cn@yeah.net

网址: www.mlbio.cn