

Anti-EHD3 antibody

Cat. No.	ml263763
Package	25 µl/100 µl/200 µl
Storage	-20°C, pH7.4 PBS, 0.05% NaN ₃ , 40% Glycerol

Product overview

Description	Anti-EHD3 rabbit polyclonal antibody
Applications	ELISA, WB, IHC
Immunogen	Synthetic peptide of human EHD3
Reactivity	Human, Mouse, Rat
Content	0.84 mg/ml
Host species	Rabbit
Ig class	Immunogen-specific rabbit IgG
Purification	Antigen affinity purification

Target information

Symbol	EHD3
Full name	EH domain containing 3

Synonyms	PAST3
Swissprot	Q9NZN3

Target Background

The Eps15 homology (EH) domain-containing protein family consists of four members, EHD1, EHD2, EHD3, and EHD4. The chromosomal locations of the human EHD genes are as follows: EHD1 maps to 11q13, EHD2 maps to 19q13.3, EHD3 maps to 2p21, and EHD4 maps to 15q11.1 (1-3). The encoded proteins of all EHD family members contain multiple conserved regions, which include an amino-terminal nucleotide-binding consensus site, a bipartite nuclear localization signal, and a carboxy-terminal EH protein-binding domain with an EF-hand motif (3,4). EHD1 is ubiquitously expressed with increased expression in testis (2,3). EHD2, EHD3, and EHD4 have more specific expression with EHD2 highly expressed in heart, EHD3 expressed in brain, kidney, liver, placenta, ovary, and heart, and EHD4 expressed in heart, placenta, and pancreas (1,5,6). The EHD proteins may participate in ligand-induced endocytosis (3-5).

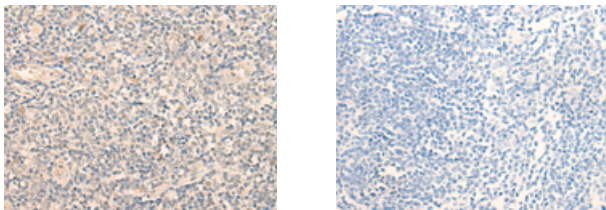
Applications

Immunohistochemistry

Predicted cell location: Cytoplasm

Positive control: Human tonsil

Recommended dilution: 20-100



The image on the left is immunohistochemistry of paraffin-embedded Human tonsil tissue using ml263763(EHD3 Antibody) at dilution 1/20, on the right is treated with synthetic peptide. (Original magnification: $\times 200$)

Western blotting

Predicted band size: 61 kDa

Positive control: Mouse brain tissue lysate

Recommended dilution: 200-1000

订购热线: 4008-898-798

Gel: 8%SDS-PAGE

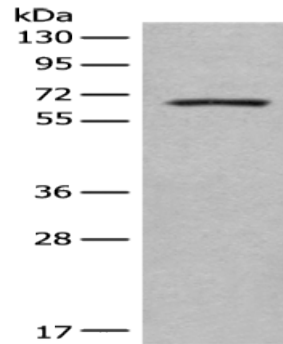
Lysate: 40 μ g

Lane: Mouse brain tissue lysate

Primary antibody: ml263763(EHD3 Antibody) at dilution 1/350

Secondary antibody: Goat anti rabbit IgG at 1/8000 dilution

Exposure time: 5 minutes



ELISA

Recommended dilution: 5000-10000

联系电话: 4008-898-798, 021-61725725

联系QQ: 2881505695, 2881505696

邮箱: mlbio_cn@yeah.net

网址: www.mlbio.cn