

Anti-GUCA1B antibody

Cat. No.	ml263974
Package	25 µl/100 µl/200 µl
Storage	-20°C, pH7.4 PBS, 0.05% NaN ₃ , 40% Glycerol

Product overview

Description	Anti-GUCA1B rabbit polyclonal antibody
Applications	ELISA, WB, IHC
Immunogen	Synthetic peptide of human GUCA1B
Reactivity	Human, Mouse
Content	1.32 mg/ml
Host species	Rabbit
Ig class	Immunogen-specific rabbit IgG
Purification	Antigen affinity purification

Target information

Symbol	GUCA1B
Full name	guanylate cyclase activator 1B

Synonyms RP48; GCAP2; GUCA2

Swissprot Q9UMX6

Target Background

The protein encoded by this gene is a calcium-binding protein that activates photoreceptor guanylate cyclases. This gene may have arisen due to a gene duplication event since there is a highly similar gene clustered with it on chromosome 6. Mutations in this gene can cause a form of retinitis pigmentosa.

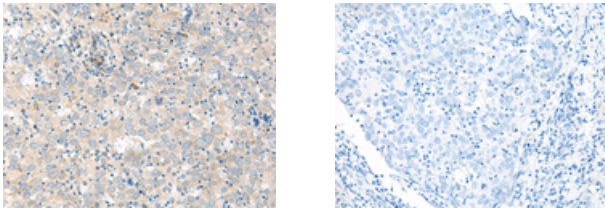
Applications

Immunohistochemistry

Predicted cell location: Cell membrane

Positive control: Human cervical cancer

Recommended dilution: 40-200



The image on the left is immunohistochemistry of paraffin-embedded Human cervical cancer tissue using ml263974(GUCA1B Antibody) at dilution 1/45, on the right is treated with synthetic peptide. (Original magnification: $\times 200$)

Western blotting

Predicted band size: 23 kDa

Positive control: Mouse eye tissue lysate

Recommended dilution: 500-2000

订购热线: 4008-898-798

Gel: 12%SDS-PAGE

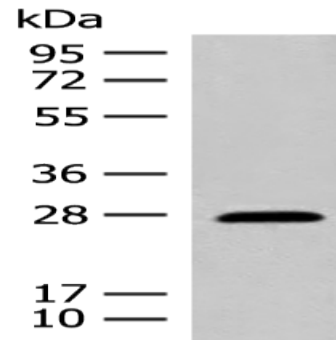
Lysate: 40 μ g

Lane: Mouse eye tissue lysate

Primary antibody: ml263974(GUCA1B Antibody) at dilution 1/500

Secondary antibody: Goat anti rabbit IgG at 1/8000 dilution

Exposure time: 10 seconds



ELISA

Recommended dilution: 5000-10000

联系电话: 4008-898-798, 021-61725725

联系QQ: 2881505695, 2881505696

邮箱: mlbio_cn@yeah.net

网址: www.mlbio.cn