

## Anti-ADGRF5 antibody

<b>Cat. No.</b>	ml264022
<b>Package</b>	25 µl/100 µl/200 µl
<b>Storage</b>	-20°C, pH7.4 PBS, 0.05% NaN <sub>3</sub> , 40% Glycerol

### Product overview

<b>Description</b>	Anti-ADGRF5 rabbit polyclonal antibody
<b>Applications</b>	ELISA, WB, IHC
<b>Immunogen</b>	Synthetic peptide of human ADGRF5
<b>Reactivity</b>	Human
<b>Content</b>	0.96 mg/ml
<b>Host species</b>	Rabbit
<b>Ig class</b>	Immunogen-specific rabbit IgG
<b>Purification</b>	Antigen affinity purification

### Target information

<b>Symbol</b>	ADGRF5
<b>Full name</b>	adhesion G protein-coupled receptor F5

**Synonyms** GPR116; KPG\_001

**Swissprot** Q8IZF2

**Target Background**

Receptor that plays a critical role in lung surfactant homeostasis. May play a role in controlling adipocyte function.

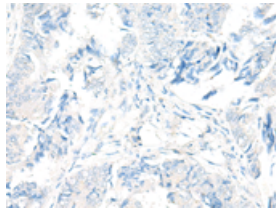
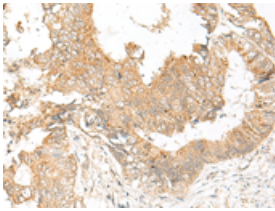
## Applications

### Immunohistochemistry

Predicted cell location: Cell membrane

Positive control: Human colorectal cancer

Recommended dilution: 30-150

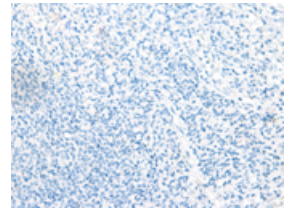
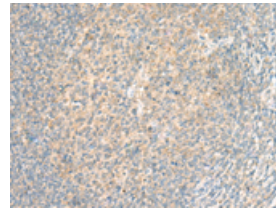


The image on the left is immunohistochemistry of paraffin-embedded Human colorectal cancer tissue using ml264022(ADGRF5 Antibody) at dilution 1/35, on the right is treated with synthetic peptide. (Original magnification:  $\times 200$ )

Predicted cell location: Cell membrane

Positive control: Human tonsil

Recommended dilution: 30-150



The image on the left is immunohistochemistry of paraffin-embedded Human tonsil tissue using ml264022(ADGRF5 Antibody) at dilution 1/35, on the right is treated with synthetic peptide. (Original magnification:  $\times 200$ )

### Western blotting

Predicted band size: 150 kDa

Positive control: 293T cell lysate

Recommended dilution: 200-1000

订购热线: 4008-898-798

Gel: 6%SDS-PAGE

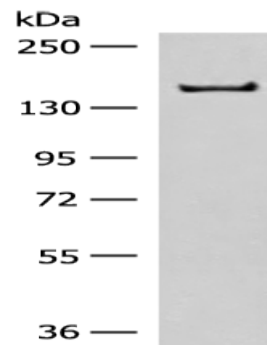
Lysate: 40  $\mu$ g

Lane: 293T cell lysate

Primary antibody: ml264022(ADGRF5 Antibody) at dilution 1/250

Secondary antibody: Goat anti rabbit IgG at 1/8000 dilution

Exposure time: 90 seconds



#### ELISA

Recommended dilution: 5000-10000

联系电话: 4008-898-798, 021-61725725

联系QQ: 2881505695, 2881505696

邮箱: [mlbio\\_cn@yeah.net](mailto:mlbio_cn@yeah.net)

网址: [www.mlbio.cn](http://www.mlbio.cn)