

Anti-GRIPAP1 antibody

Cat. No.	ml264122
Package	25 µl/100 µl/200 µl
Storage	-20°C, pH7.4 PBS, 0.05% NaN ₃ , 40% Glycerol

Product overview

Description	Anti-GRIPAP1 rabbit polyclonal antibody
Applications	ELISA, WB
Immunogen	Synthetic peptide of human GRIPAP1
Reactivity	Human, Mouse, Rat
Content	2.1 mg/ml
Host species	Rabbit
Ig class	Immunogen-specific rabbit IgG
Purification	Antigen affinity purification

Target information

Symbol	GRIPAP1
Full name	GRIP1 associated protein 1
Synonyms	GRASP-1
Swissprot	Q4V328

Target Background

This gene encodes a guanine nucleotide exchange factor for the Ras family of small G proteins (RasGEF). The encoded protein interacts in a complex with glutamate receptor interacting protein 1 (GRIP1) and plays a role in the regulation of AMPA receptor function.

订购热线: 4008-898-798

Applications

Western blotting

Predicted band size:96 kDa

Positive control:Human fetal liver tissue lysate

Recommended dilution: 500-2000

Gel: 8%SDS-PAGE

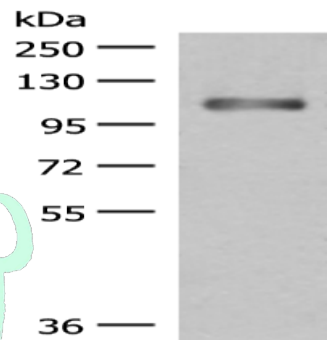
Lysate: 40 μ g

Lane: Human fetal liver tissue lysate

Primary antibody: ml264122(GRIPAP1 Antibody) at dilution 1/550

Secondary antibody: Goat anti rabbit IgG at 1/8000 dilution

Exposure time: 2 minutes



ELISA

Recommended dilution:5000-10000

联系电话: 4008-898-798, 021-61725725

联系QQ: 2881505695, 2881505696

邮箱: mlbio_cn@yeah.net

网址: www.mlbio.cn