

Anti-HEBP1 antibody

Cat. No.	ml264155
Package	25 µl/100 µl/200 µl
Storage	-20°C, pH7.4 PBS, 0.05% NaN ₃ , 40% Glycerol

Product overview

Description	Anti-HEBP1 rabbit polyclonal antibody
Applications	ELISA, WB, IHC
Immunogen	Synthetic peptide of human HEBP1
Reactivity	Human
Content	1.08 mg/ml
Host species	Rabbit
Ig class	Immunogen-specific rabbit IgG
Purification	Antigen affinity purification

Target information

Symbol	HEBP1
Full name	heme binding protein 1

Synonyms HBP; HEBP

Swissprot Q9NRV9

Target Background

The full-length protein encoded by this gene is an intracellular tetrapyrrole-binding protein. This protein includes a natural chemoattractant peptide of 21 amino acids at the N-terminus, which is a natural ligand for formyl peptide receptor-like receptor 2 (FPRL2) and promotes calcium mobilization and chemotaxis in monocytes and dendritic cells.

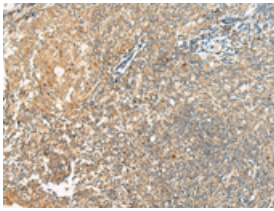
Applications

Immunohistochemistry

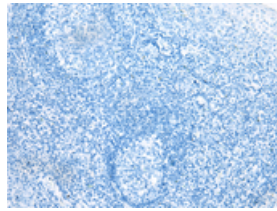
Predicted cell location: Cytoplasm

Positive control: Human tonsil

Recommended dilution: 40-200



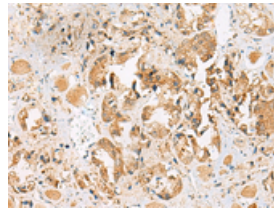
The image on the left is immunohistochemistry of paraffin-embedded Human tonsil tissue using ml264155(HEBP1 Antibody) at dilution 1/40, on the right is treated with synthetic peptide. (Original magnification: ×200)



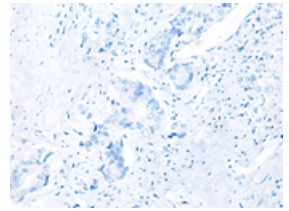
Predicted cell location: Cytoplasm

Positive control: Human prostate cancer

Recommended dilution: 40-200



The image on the left is immunohistochemistry of paraffin-embedded Human prostate cancer tissue using ml264155(HEBP1 Antibody) at dilution 1/40, on the right is treated with synthetic peptide. (Original magnification: ×200)



Western blotting

Predicted band size: 21 kDa

Positive control: Human kidney tissue and 293T cell lysates

Recommended dilution: 500-2000

订购热线: 4008-898-798

Gel: 12%SDS-PAGE

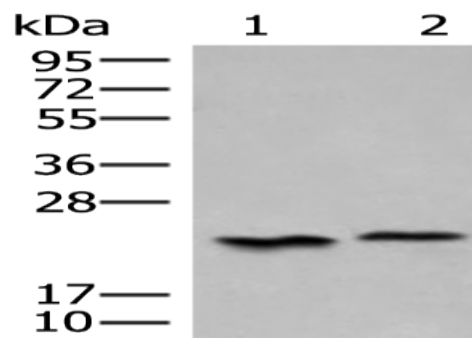
Lysate: 40 μ g

Lane 1-2: Human kidney tissue and 293T cell lysates

Primary antibody: ml264155(HEBP1 Antibody) at dilution 1/450

Secondary antibody: Goat anti rabbit IgG at 1/8000 dilution

Exposure time: 30 seconds



ELISA

Recommended dilution: 5000-10000

联系电话: 4008-898-798, 021-61725725

联系QQ: 2881505695, 2881505696

邮箱: mlbio_cn@yeah.net

网址: www.mlbio.cn