

Anti-KDM4D antibody

Cat. No.	ml264343
Package	25 µl/100 µl/200 µl
Storage	-20°C, pH7.4 PBS, 0.05% NaN ₃ , 40% Glycerol

Product overview

Description	Anti-KDM4D rabbit polyclonal antibody
Applications	ELISA, WB
Immunogen	Synthetic peptide of human KDM4D
Reactivity	Human
Content	0.78 mg/ml
Host species	Rabbit
Ig class	Immunogen-specific rabbit IgG
Purification	Antigen affinity purification

Target information

Symbol	KDM4D
Full name	lysine demethylase 4D
Synonyms	JMJD2D
Swissprot	Q6B0I6

Target Background

Histone demethylase that specifically demethylates 'Lys-9' of histone H3, thereby playing a central role in histone code. Does not demethylate histone H3 'Lys-4', H3 'Lys-27', H3 'Lys-36' nor H4 'Lys-20'. Demethylates both di- and trimethylated H3 'Lys-9' residue, while it has no activity on monomethylated residues. Demethylation of Lys residue generates formaldehyde and succinate.

订购热线: 4008-898-798

Applications

Western blotting

Predicted band size:58 kDa

Positive control:Human fetal brain tissue lysate

Recommended dilution: 500-2000

Gel: 8%SDS-PAGE

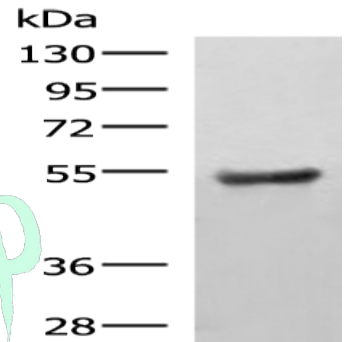
Lysate: 40 µg

Lane: Human fetal brain tissue lysate

Primary antibody: ml264343(KDM4D Antibody) at dilution 1/650

Secondary antibody: Goat anti rabbit IgG at 1/5000 dilution

Exposure time: 3 minutes



ELISA

Recommended dilution:5000-10000

联系电话: 4008-898-798, 021-61725725

联系QQ: 2881505695, 2881505696

邮箱: mlbio_cn@yeah.net

网址: www.mlbio.cn