

G 蛋白偶联受体 C5B 抗体

产品货号： mlR12029

英文名称： GPRC5B

中文名称： G 蛋白偶联受体 C5B 抗体

别名： A 69G12.1; A-69G12.1; G protein coupled receptor family C group 1 member B; G protein coupled receptor family C group 5 member B; G-protein coupled receptor family C group 5 member B; GPC5B_HUMAN; Gprc5b; LOC51704; RAIG-2; RAIG2; Retinoic acid responsive gene protein; Retinoic acid-induced gene 2 protein; GPCR GPRC5B.

研究领域： 神经生物学 信号转导 细胞膜受体 G 蛋白偶联受体 G 蛋白信号

抗体来源： Rabbit

克隆类型： Polyclonal

交叉反应： Human, Mouse, Rat, Dog, Pig, Cow, Horse, Rabbit, Sheep,

产品应用： ELISA=1:500-1000 IHC-P=1:400-800 IHC-F=1:400-800 Flow-Cyt=1 μ g/Test ICC=1:100-500 IF=1:100-500 (石蜡切片需做抗原修复)
not yet tested in other applications.
optimal dilutions/concentrations should be determined by the end user.

分子量： 42kDa

细胞定位： 细胞浆 细胞膜

性状： Lyophilized or Liquid

浓度： 1mg/ml

免疫原： KLH conjugated synthetic peptide derived from human G protein coupled receptor family C group 1 member B:1-100/403 <Extracellular>

亚 型 : IgG

纯化方法 : affinity purified by Protein A

储 存 液 : 0.01M TBS(pH7.4) with 1% BSA, 0.03% Proclin300 and 50% Glycerol.

保存条件 : Store at -20 ° C for one year. Avoid repeated freeze/thaw cycles. The lyophilized antibody is stable at room temperature for at least one month and for greater than a year when kept at -20° C. When reconstituted in sterile pH 7.4 0.01M PBS or diluent of antibody the antibody is stable for at least two weeks at 2-4 ° C.

PubMed : PubMed

产品介绍 : GPRC5B (G protein-coupled receptor family C group 5 member B, retinoic acid-induced gene 2 protein) is a 403 amino acid protein encoded by the human GPRC5B gene. GPRC5B is an orphan receptor member of the G protein-coupled receptor 3 family. G protein-coupled receptors (GPCRs or GPRs) contain 7 transmembrane domains and transduce extracellular signals through heterotrimeric G proteins. Key roles for G protein-coupled receptors include control of protein maturation and cell surface delivery, and providing the correct framework for interactions with both heterotrimeric G proteins and arrestins to allow signal generation and termination. This retinoic acid-inducible G protein-coupled receptor provides evidence for a possible interaction between retinoid and G protein signaling pathways. GPRC5B is highly expressed in kidney, pancreas and testis, and has moderate expression in brain, heart, prostate, small intestine and spleen.

Function:

Unknown. This retinoic acid-inducible G-protein coupled receptor provide evidence for a possible interaction between retinoid and G-protein signaling pathways.

Subcellular Location:

Cell membrane. Cytoplasmic vesicle membrane. Localized in the plasma membrane and perinuclear vesicles.

Tissue Specificity:

Expression is high in kidney, pancreas, and testis, medium in brain, heart, prostate, small intestine, and spleen,

low in liver, placenta, skeletal muscle, colon, ovary, and thymus, and not detectable in lung and peripheral leukocyte. According to PubMed:10945465, highly expressed in most brain areas examined, with the highest levels observed in corpus callosum, caudate nucleus, putamen, substantia nigra, thalamus, hippocampus, and spinal chord as well as in dorsal root ganglia (DRG). In the periphery, expression levels are relatively low, compared to the CNS, with the strongest expression detected in pancreas, testis, uterus, and stomach.

Similarity:

Belongs to the G-protein coupled receptor 3 family.

SWISS:

Q9NZH0

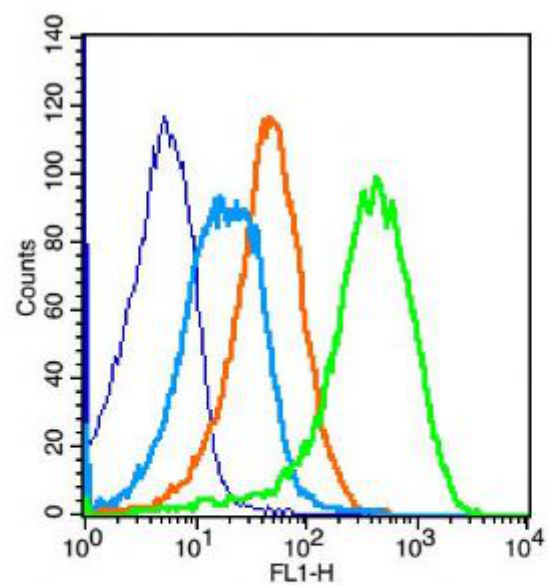
Gene ID:

51704

Important Note:

This product as supplied is intended for research use only, not for use in human, therapeutic or diagnostic applications.

产品图片



Key	Name	Parameter	Gate
—	(mo)Splenocyte-blank.049	FL1-H	G1
—	bs-0295P(CST)-(FITC)#1E624C.051	FL1-H	G1
—	bs-0295G-FITC(CST)-(#1E624A.050	FL1-H	G1
—	bs-12029R-(FITC)-(mo)Sple-1.068	FL1-H	G1